

POS Thermal Receipt Printer

A11 Prime



Installation Guide OPOS Driver

Table of Contents

- 1. Manual Information3**
- 2. Usage Environment.....4**
 - 2-1 Features4
 - 2-2 Operating Environment4
 - 2-3 Supported Interface4
- 3. Installation & Uninstallation.....5**
 - 3-1 Installation5
 - 3-2 Uninstallation7
- 4. Warning.....8**

1. Manual Information

This is a manual about how to use Posbank OPOS DRIVER program, installation, Posbank OPOS DRIVER setup, and making application using Posbank OPOS DRIVER.

Before use Posbank POS printer, set and configure printer by using Posbank OPOS driver Setup Utility.

Throughout this manual, “OLE for Retail POS” is called “OPOS”.

Throughout this manual, “Unified for Retail POS” is called “UPOS”.

[Further Source]

OLE for Retail POS committee available from <http://monroecs.com/opos.htm>

Driver Update from <http://www.posbank.com>

We at Posbank maintain ongoing efforts to enhance and upgrade the functions and quality of all our products. In following, product specifications and/or user manual content may be changed without prior notice.

2. Usage Environment

2-1 Features

Through these standardized API functions, you can develop powerful, open POS systems easily.

2-2 Operating Environment

Hardware	IBM PC/AT or Compatible
Operating System	Windows XP SP3 (32bit) / Windows XP SP1 (64bit) Windows Server 2003 SP1 Windows Vista / Windows Server 2008 Windows 7 / Windows 8 / Windows 10
HDD	Recommend 10M bytes over
Memory	Recommend 32M bytes over
Serial Ports	COM1, COM2, COM3 ... COM50
USB ports	Windows XP SP3 (32bit) / Windows XP SP1 (64bit) Windows Server 2003 SP1 Windows Vista / Windows Server 2008 Windows 7 / Windows 8 / Windows 10
Supported Languages	Microsoft Visual Basic Version 6.0 Microsoft Visual C++ Version 6.0 Power Builder / Delphi / etc

2-3 Supported Interface

POSPrinter

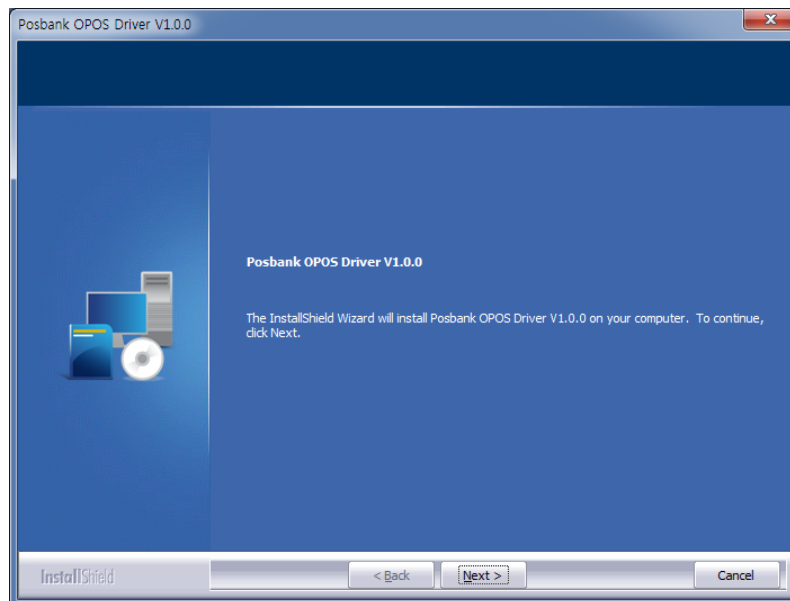
Model	Serial	USB	Ethernet	Bluetooth	Wireless LAN
A11 Prime	O	O	O	O	O

3. Installation & Uninstallation

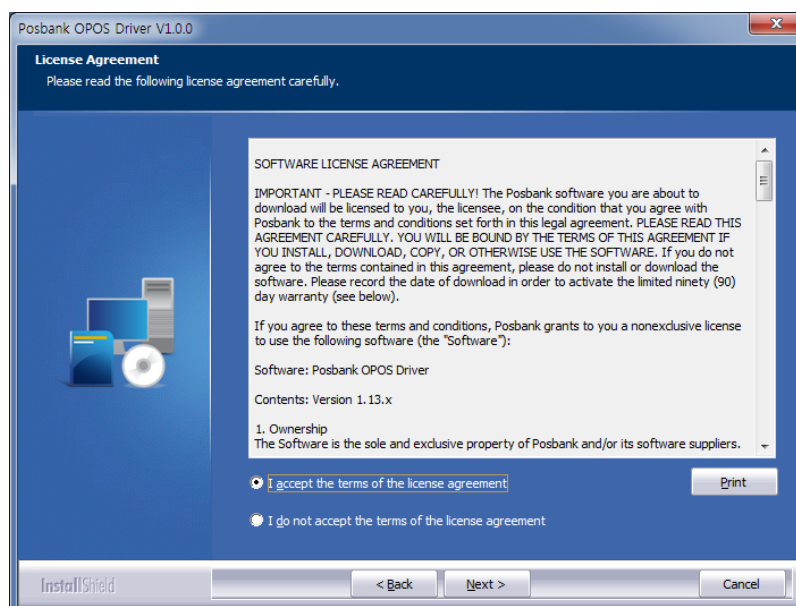
Posbank OPOS DRIVER Installer is included pure OPOS Drivers (Control Object, Service Object) and 'OPOS Setup Utility' Program. But this manual, sample source are not included the installer. There are exist another folder.

3-1 Installation

- 1) Run the OPOS Driver installation file.
- 2) "Welcome" dialog is displayed.



- 3) "Start Copying Files" dialog is displayed.

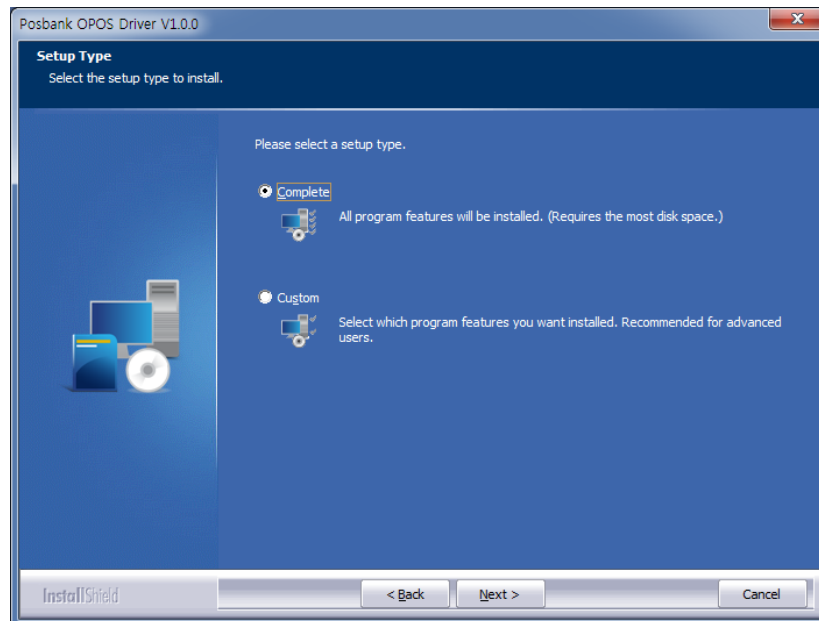


4) “Install Type” dialog is displayed.

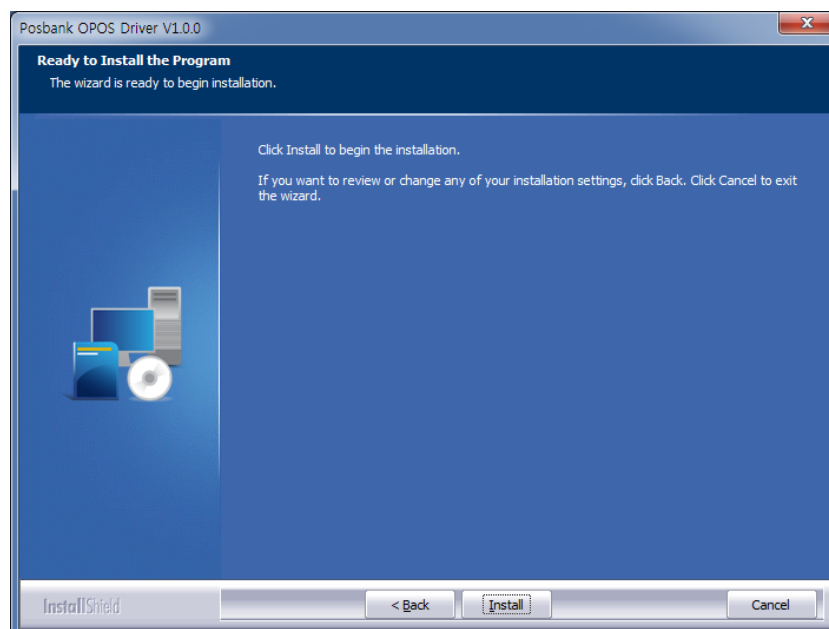
The default directory is.

* 32bit OS: “C:\Program Files\OPOS\Posbank OPOS DRIVER\”

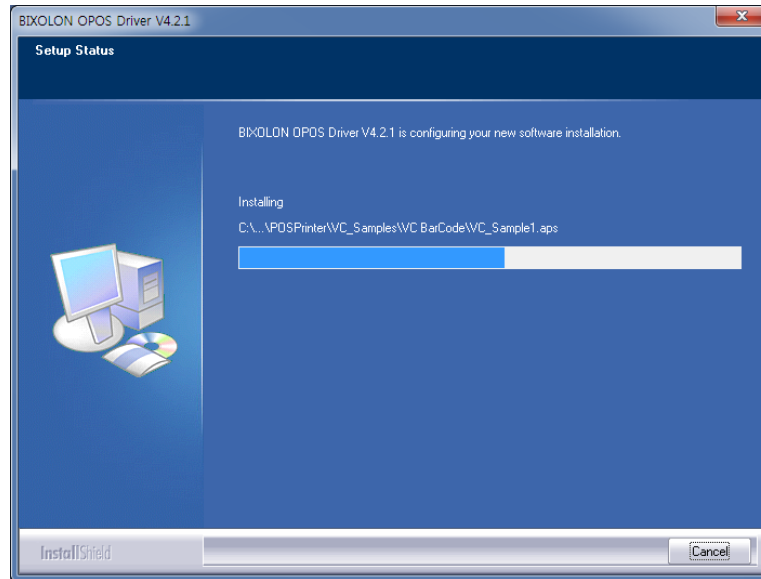
* 64bit OS: “C:\Program Files (x86)\OPOS\Posbank OPOS DRIVER\”



5) Ready to Install.



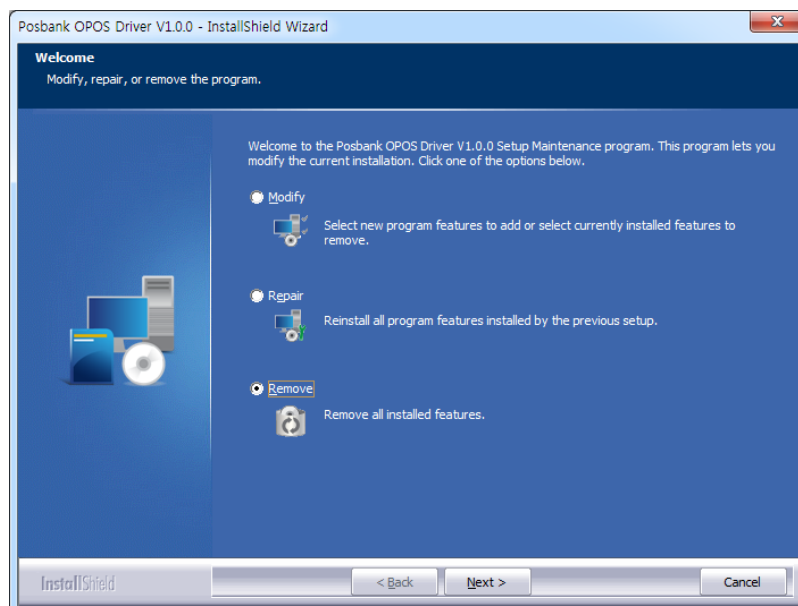
6) Copy Operation.



7) When all copy operations are completed “Readme.txt” File Contents is displayed.

3-2 Uninstallation

To remove or modify Posbank OPOS Driver, Select “Posbank OPOS Driver” from “Add / Remove Programs” in Control Panel and remove or modify.



4. Warning

- 1) Posbank OPOS Driver does not work properly, if you use the OPOS driver of other manufacturers.
- 2) Posbank does not guarantee proper operation with the POS devices of other manufacturers.